

Barakaldo, 10 de mayo 2017
IIS Biocruces - Hospital Universitario Cruces
Sala Arriaga. Planta baja Salón de Actos
10:30 - 12:30 h

Impartido por:
Stephane Moreau
Product Manager Shimadzu

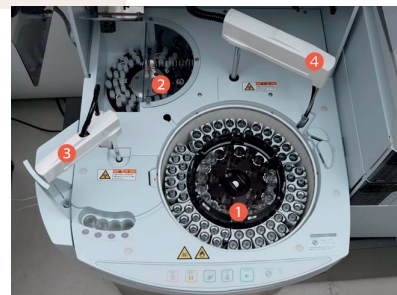
Nuevos desarrollos de análisis clínicos en LCMS/MS



El seminario se impartirá en inglés

Nuevo equipo de preparación de muestras on line LCMSMS: CLAM-2000

- 1- Table for samples and reagents
- 2- Table for Specialized vials
- 3- Probe for dispensing samples
- 4- Probe for dispensing reagents



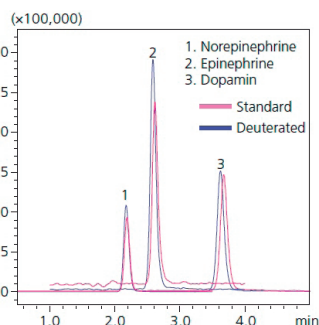
Aplicaciones

Immunosupresores

Table 1 Tacrolimus, sirolimus, everolimus and CSA, MRM transitions, retention times (RT). T/I = target or internal standard.

Compound	T	Formula	MRM1	MRM2	RT
Tacrolimus	T	C ₄₄ H ₆₉ NO ₁₂	821>768	821>786	1.22
Sirolimus	T	C ₅₁ H ₇₉ NO ₁₃	931>864	931>846	1.28
Everolimus	T	C ₅₃ H ₈₃ NO ₁₄	975>908	975>858	1.29
Cyclosporine A	T	C ₆₂ H ₁₁₁ N ₁₁ O ₁₂	1220>120	1220>1184	1.40
Ascomycin	I	C ₄₃ H ₆₉ NO ₁₂	809>756	809>774	1.21
D4 Everolimus	I	C ₅₃ H ₇₉ D ₄ NO ₁₄	979>912	979>894	1.29
Cyclosporine D	I	C ₆₂ H ₉₇ D ₁₄ N ₁₁ O ₁₁	1234>121	1234>1199	1.44

Catecolaminas



...y muchas otras más

Table 1 Quantitative Range of Neat and Matrix-Matched Calibration Curves

Compound name	Neat standard curve		Matrix-matched	
	Range (pg/mL)	Linearity (r ²)	Range (pg/mL)	Linearity (r ²)
Noepinephrine-d6 (158.1 > 111.1)	2.5 – 2000	0.9999	2.5 – 2000	0.9997
Epinephrine-d6 (190.1 > 172.1)	10 – 2000	0.9999	10 – 2000	0.9994
Dopamine-d4 (158.1 > 95.1)	5 – 2000	0.9999	10 – 2000	0.9995



Inscripciones:
marketing@izasascientific.com
límite de inscripción 5 mayo

www.izasascientific.com